



Excellent
Line



NEXO

Alpha
Line for NEXO



NEXO

A close-up photograph of a black hexagonal mesh grille. In the center, the word "NEXO" is displayed in a white, bold, sans-serif font. The letters are slightly recessed into the mesh. Below the grille, a dark, flat surface is visible, featuring three horizontal, rectangular metallic strips.

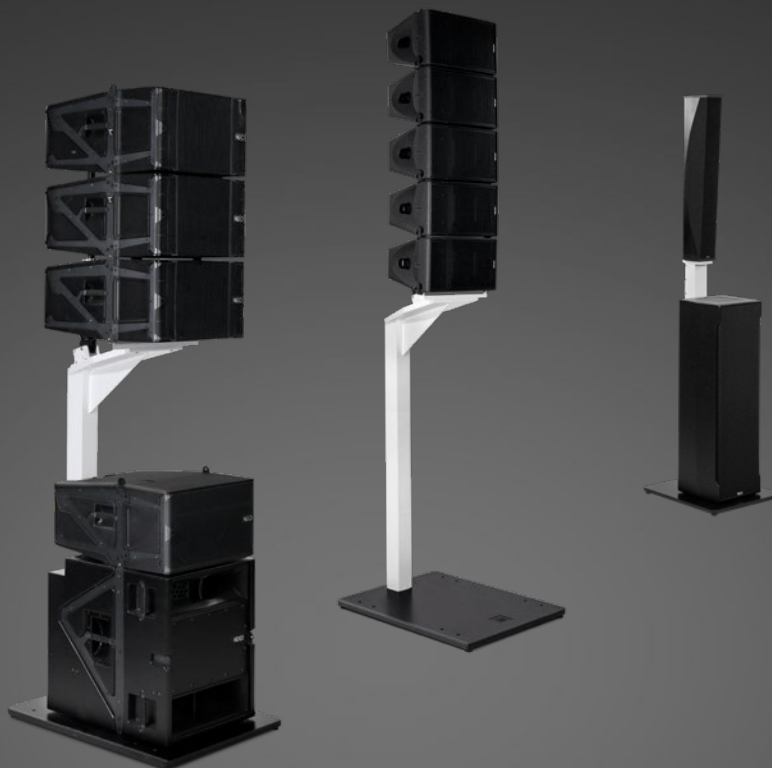
Functional Specialized

The Excellent Line offers the perfect balance between purist design and functional technology for first-class atmosphere.

The new Excellent Line Alpha was specially developed for the high-end entertainment sector, making it the perfect complement to NEXO loudspeakers.

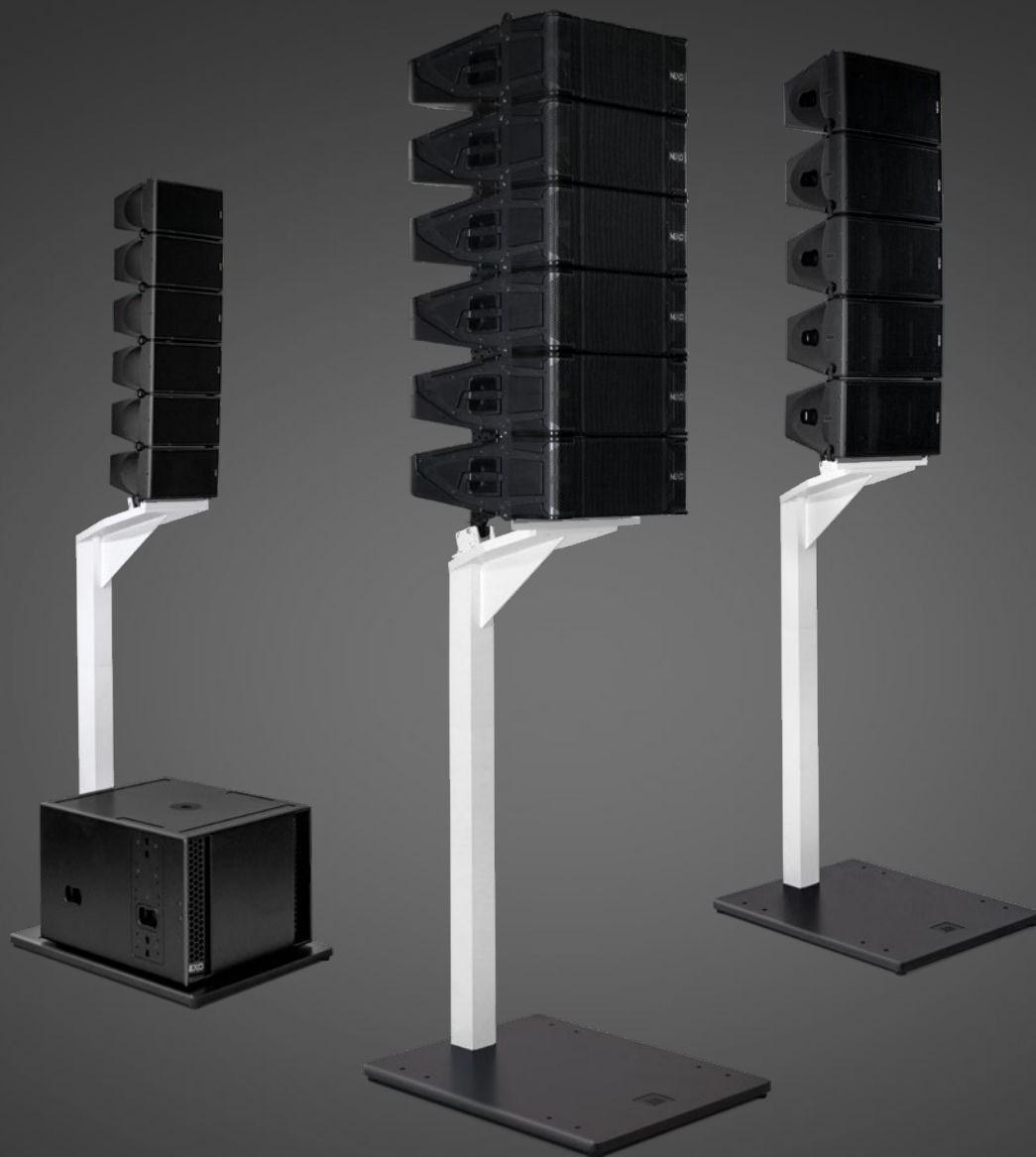
Alpha Line for NEXO

can accommodate the
complete NEXO loudspeaker
range, from stadium to gala.



NEXO

The Excellent Line Alpha for NEXO is a flexible DesignStand solution for all NEXO full-range and subwoofer cabinets. Especially in small to midsized event locations, the Excellent Line Alpha for NEXO performs to perfection. The combination of the discreet DesignStand with one of the most powerful PA systems on the market offers new solutions for high-class event locations. The audience can focus on the subject of the event and is not disturbed by massive ground stacks or tower lifts. Moreover the sound performance meets the highest demands.



Alpha Line for NEXO STM/M Series

changes the look of a ground stack.
No subwoofers are needed to raise full-range
cabinets to their working height.

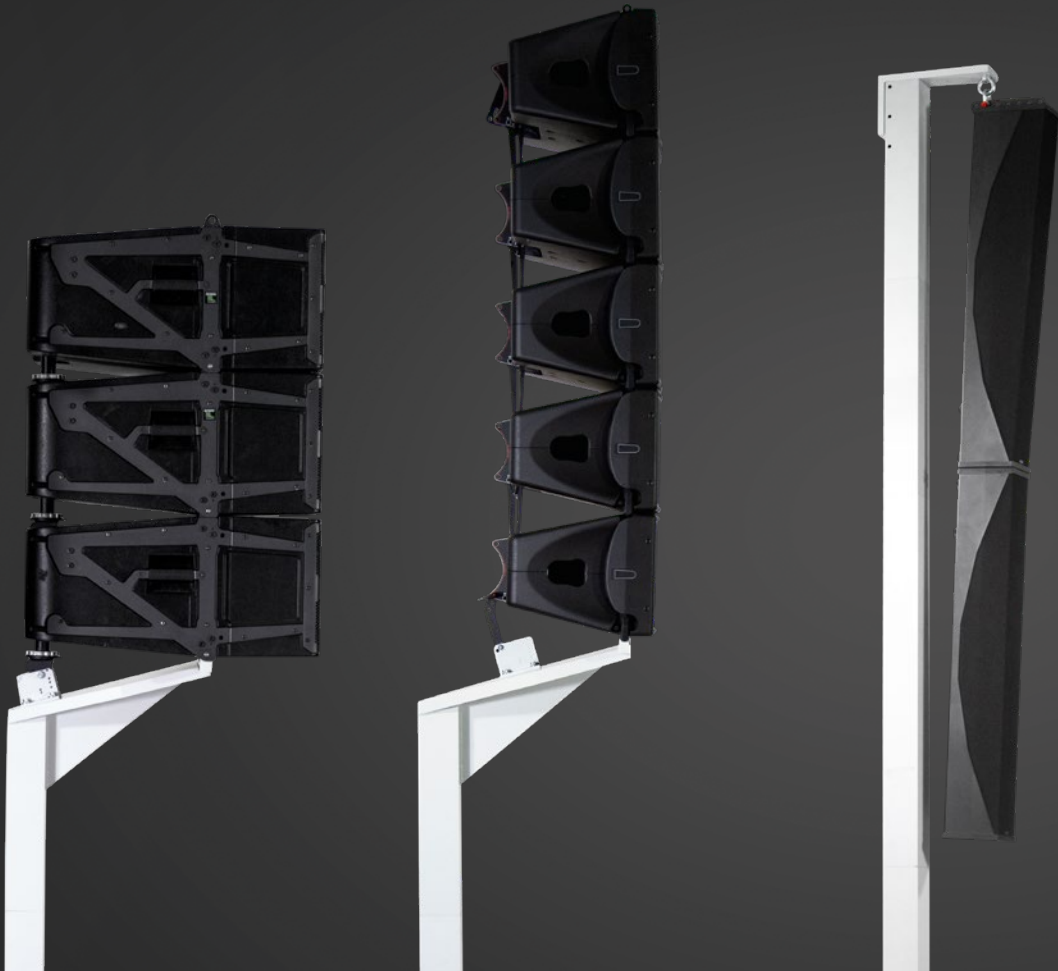
The selected subwoofer does not need rigging
compatibility to the full-range modules.



Three different Baseplates
accommodate the complete NEXO range
of subwoofers and can be combined
individually with different tops.

With holes for permanent installation.

The Adapter Heads
are specialized on the
NEXO Series STM/M and ID84-Series.



DesignStand Alpha

for NEXO



Applications

indoor stand for
NEXO loudspeakers



Height Options

STM/M Series
min. 150 cm
max. 270 cm
ID84 Series
min. 180 cm
max. 300 cm



Adapter Heads

adapter heads
for NEXO Series
STM/M, ID84



Capacity

max. recommended
load 240 kg



Baseplates

BP1000, S2-ID84
and S3-ID84 with
decentralized mount

Components for NEXO



Adapter Heads

NEXO STM/M adapter head | 17 kg

NEXO ID adapter head | 4.4 kg



Universal Head HD

(NEXO ID84-Series only)

1 x 56cm | 2,8 kg



Extensions

10 x 10 cm quadratic pipes

100 cm | 6.4 kg

80 cm | 5.4 kg

60 cm | 4.4 kg



BP1000



S2-ID84



S3-ID84

Baseplates

BP1000 | 61 kg

S2-ID84 | 20 kg, 4 cm

S3-ID84 | 38 kg, 4 cm

With the three baseplates, every NEXO full-range cabinet can be used without subwoofer—neither the weight of the subwoofer is necessary nor the subwoofer itself as a stand.

The three baseplates are matched to three sizes of subwoofer lines. The baseplate BP1000 is designed for heavy subwoofers such as S118 and MSUB15. This baseplate is the choice for STM M46, M28, M10 and M6 line arrays. BP1000 also fits with the PS adapter head.

The ID84 is used with the IDS312 subwoofer. The IDS312 can be placed on the two floor plates S2-ID84 and S3-ID84.

Baseplate BP1000

for NEXO STM/M

Color: RAL 9005



RS18 / RS15



S118



LS18



MSUB15

Baseplate S2-ID84

for NEXO ID84–Typ1

Color: RAL 9005



IDS312

Baseplate S3-ID84

for NEXO ID84–Typ2

Color: RAL 9005



IDS312

The NEXO full-range cabinets are divided into two groups. The STM/M Group consists of STM46, STM28, M10 and M6. The STM/M adapter head works with a 10x10 cm quadratic column and has changeable mounting bars for the different cabinets.

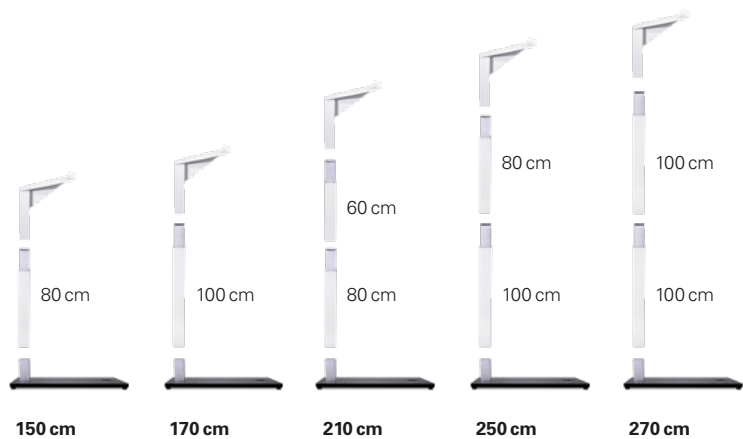
The second group is the ID84 series. The NEXO ID84 adapter is placed on an Excellent Line universal head HD. The ID84 can be hung on the NEXO ID84 adapter or placed on it.

Height Options

for NEXO STM/M Series

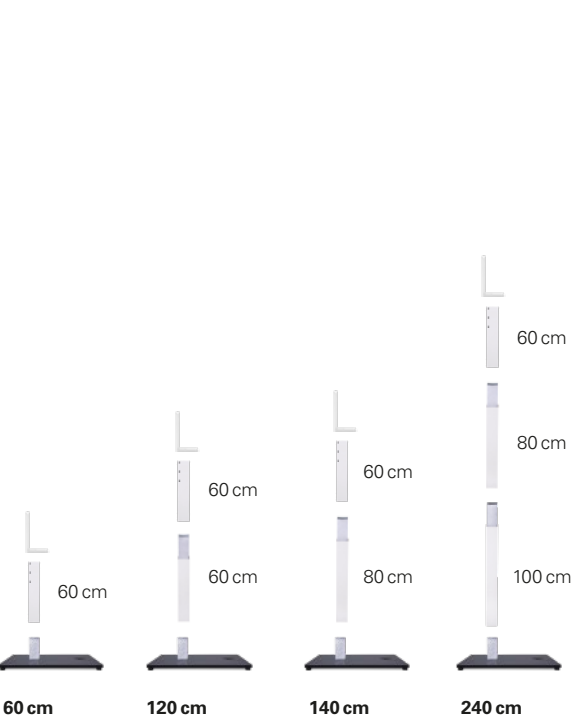


Baseplate and Mount
for NEXO STM/M Series



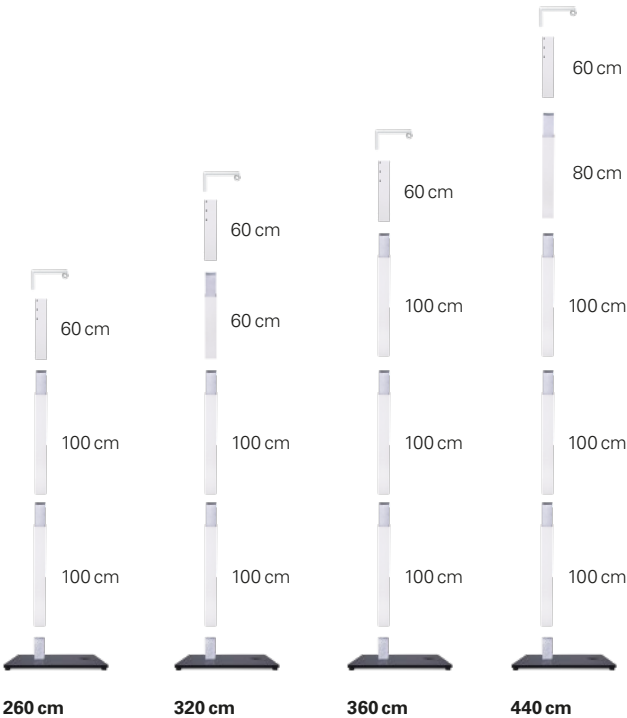
Height Options

for NEXO ID84-Series –
Type2 stacking Mode



Height Options

for NEXO ID84-Series –
Type2 flying Mode

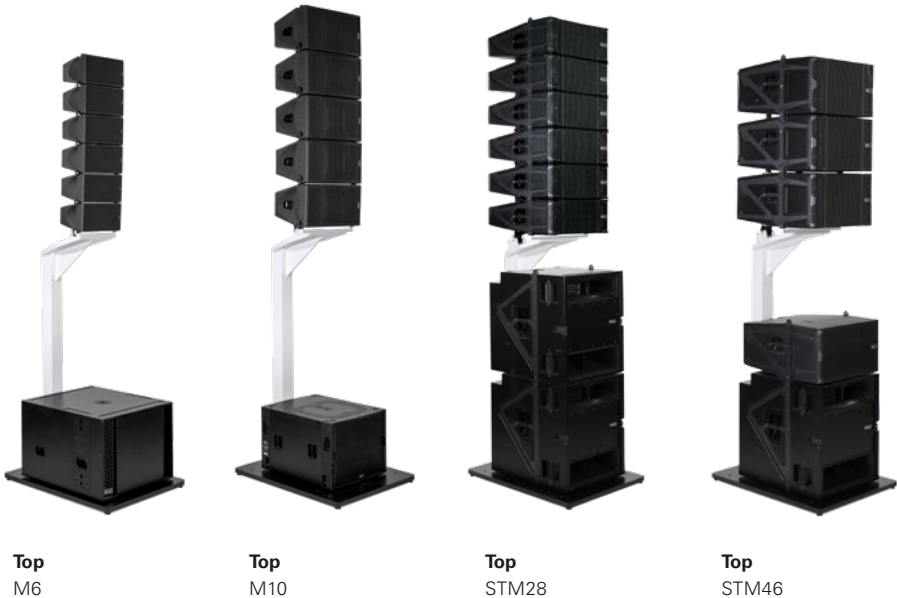


NEXO STM/M Series

Compatibility



Baseplate
The NEXO STM/M adapter head is combined with the baseplate BP1000.

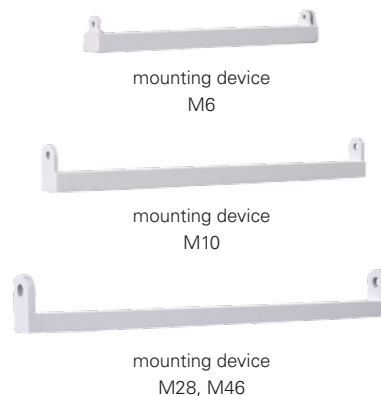


All STM/M tops work with BP1000 and can be combined with any suitable bass.

Adapter Head

for NEXO STM/M Series

Color: RAL 7035



The STM/M adapter head has changeable bars for the different line arrays. The maximum load is 240 kg, which is the weight of four M46 cabinets. The overall height of the ground stack is 4 m. The first cabinet can be tilted in negative and positive directions.

NEXO ID84 Series –Type 1

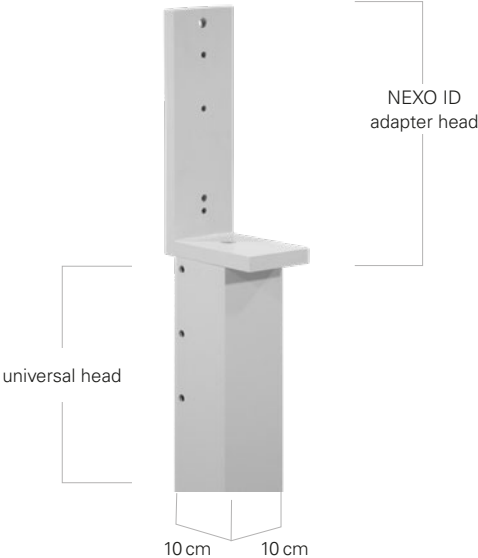
Compatibility and Adapter Head



Baseplate
The NEXO ID84 adapter head can be combined with the baseplate S2-ID84.



Top
ID84 with IDS312

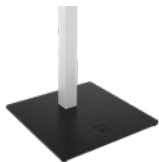


The NEXO ID84 adapter is screwed onto the universal head HD. The long side points upwards. A NEXO ID84 or ID84L is placed on the NEXO ID84 adapter and screwed onto the back. The speaker cables can be routed into the head on the rear side.

NEXO ID84 Series –

Type2 stacking and flying Mode

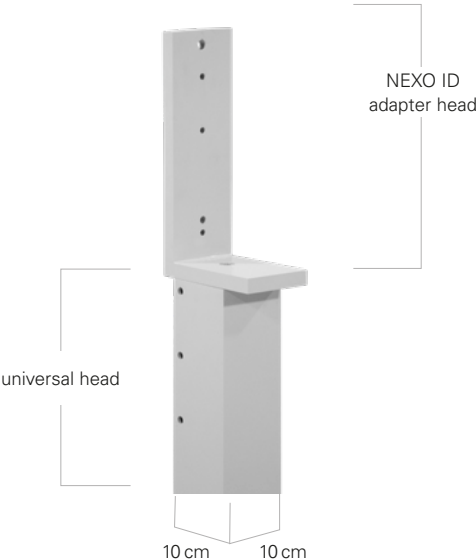
Compatibility and Adapter Head



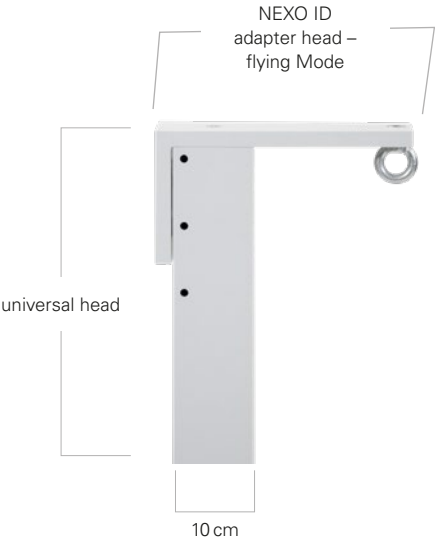
Baseplate
The NEXO ID84 adapter head can be combined with the baseplate S3-ID84.



Top
2 × ID84 with IDS312



NEXO ID84 angle - stacking Mode
The NEXO ID84 adapter is screwed onto the universal head HD. The long side points upwards. A NEXO ID84 or ID84L is placed on the NEXO ID84 adapter and screwed onto the back. The speaker cables can be routed into the head on the rear side.

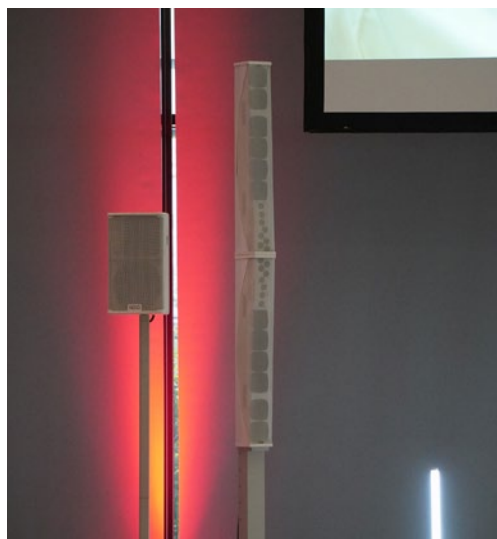
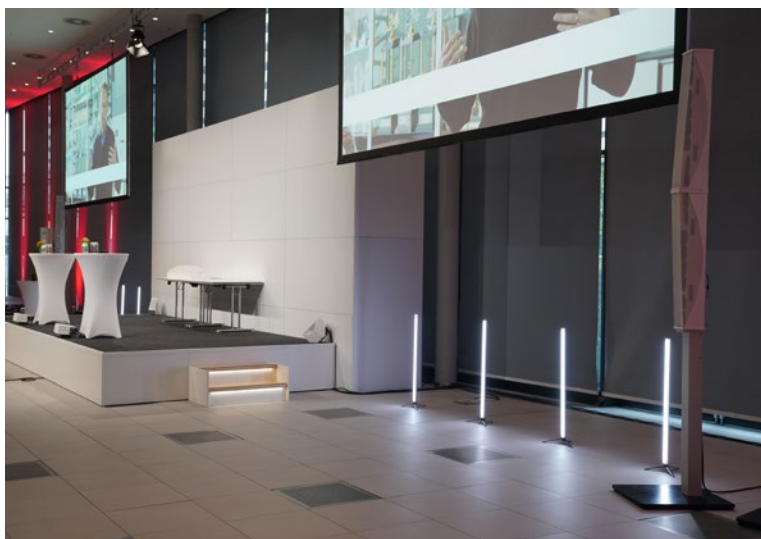


NEXO ID84 Adapter - flying Mode
The NEXO ID84 adapter is screwed horizontally onto the universal head with the long side of the angle for flown operation. In this position, the NEXO ID84 Adapter acts in this position as a gallows to which a eyelet is mounted in a tool-secure manner. The NEXO ID84 Lifting Bracket is attached to the eyelet. The flown operation allows a higher dispersion position and a tilt of the speaker.

Impressions



└ 2×NEXO ID84 / 1×NEXO IDS312 ≡ 3,2m



└ 2×NEXO ID84 / 1×NEXO PS10 ≡ 3,2m

Let us advise you on the capabilities of
Excellent Line Alpha:
+49 (0) 54 52–97 33 10


The components of Excellent Line Alpha are manufactured
and distributed in Germany.



H.O.F. ALUTEC Metallverarbeitungs GmbH & Co. KG
Brookstrasse 8
D-49497 Mettingen

T +49 (0) 54 52–97 33 10
F +49 (0) 54 52–97 33 19

sales@h-of.de



The Excellent Line is a developing brand,
so we welcome your feedback:
vision@excellent-line.com

