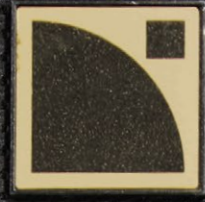




Excellent
Line



Alpha
Line for L-Acoustics



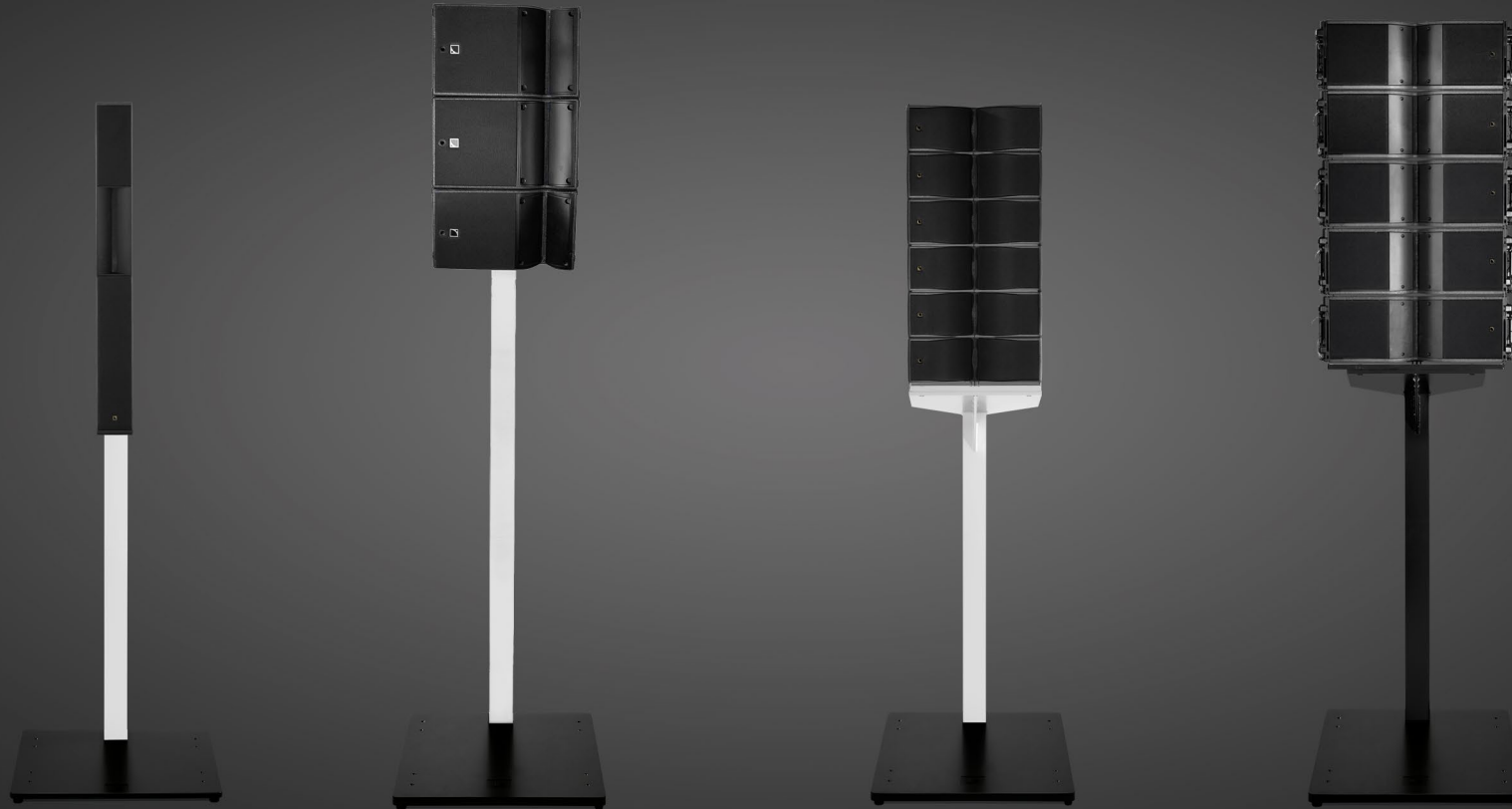
Functional Specialized

The Excellent Line offers the perfect balance between purist design and functional technology for first-class atmosphere.

The new Excellent Line Alpha was specially developed for the high-end entertainment sector, making it the perfect complement to L-Acoustics loudspeakers.

Alpha Line for L-Acoustics

Syva, A10,
Kiva II and Kara.



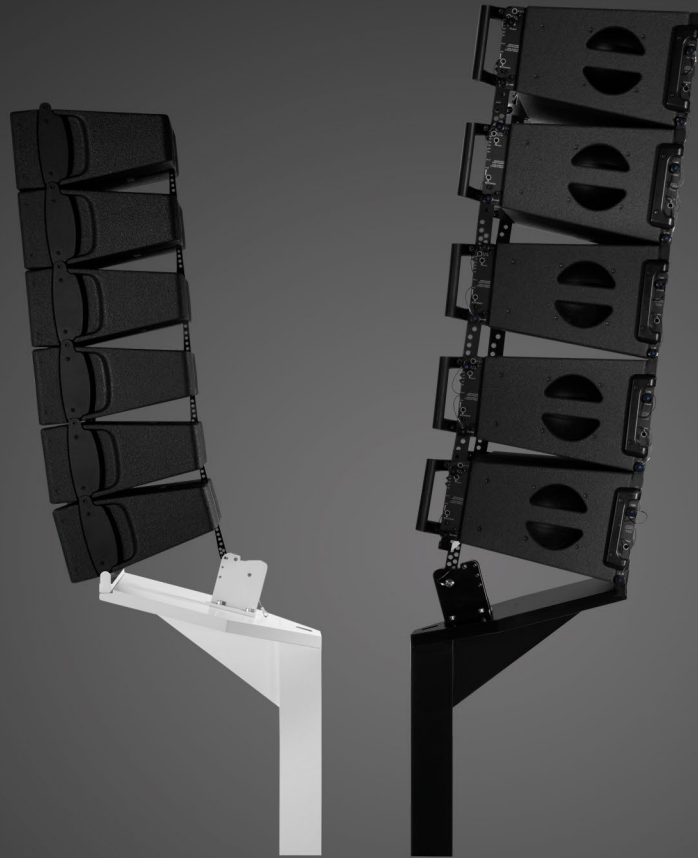
The Excellent Line Alpha is the stand system for L-Acoustics small and medium-sized speaker systems. The solid baseplate can support L-Acoustics Syva Low/Sub, SB15 or SB18 subwoofers and, thanks to eight additional drill holes, can also be mounted to supporting structures. All components allow potential equalisation to be carried out.

The BP800 and BP1000 baseplates
can house L-Acoustics
Syva Low/Sub, SB15 and
SB18 subwoofers.



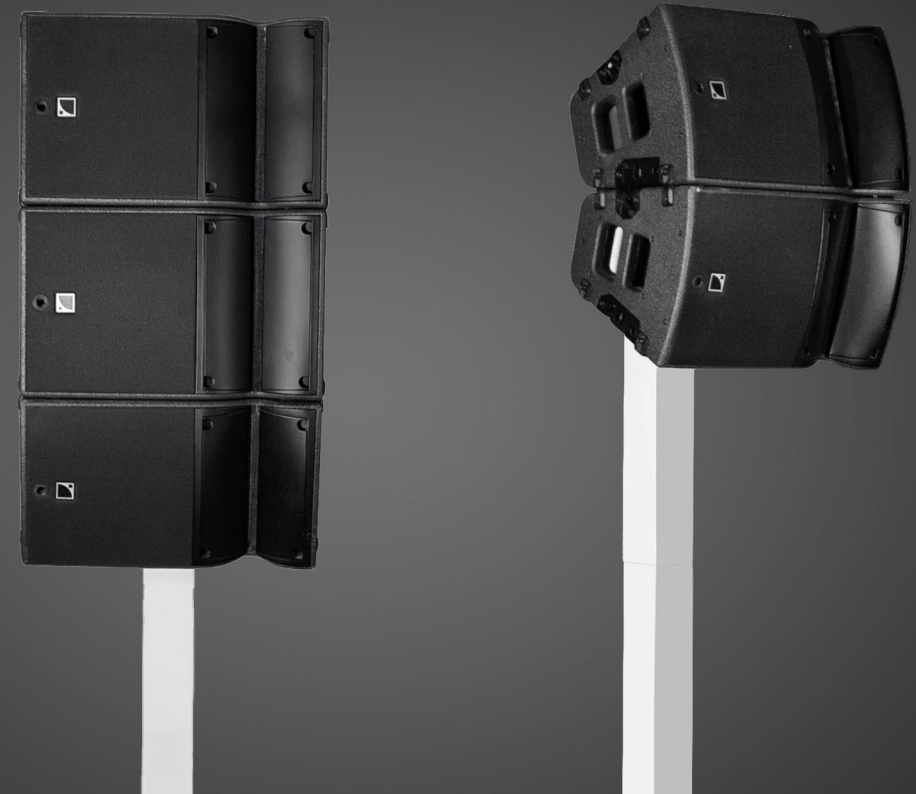
The adapter head
for the L-Acoustics Syva
can be tilted by up to -10° .

A special cover also conceals
the rotating mechanism.



The adapter head
for the L-Acoustics
A10 (Focus and Wide) –
combine up to 3 elements.

The adapter head
for the L-Acoustics Kiva II
and Kara allows the first module
in the array to be tilted.



DesignStand Alpha

for L-Acoustics



Applications
indoor stand for
L-Acoustics
loudspeakers



Height Options
Permitted
total height
400 cm



Adapter Heads
adapter heads
for L-Acoustics Syva,
Kiva II, Kara and
A10 (Focus/Wide)



Capacity
max. recommended
load 180 kg



Baseplates
BP1000 and BP800
with decentralized
mount

Components for L-Acoustics



Adapter Heads
L-Acoustics Syva
adapter head | 9 kg
L-Acoustics A10
adapter head | 12 kg
L-Acoustics Kiva II
adapter head | 22 kg
L-Acoustics Kara
adapter head | 22 kg



Extensions
100 cm | 6.4 kg
80 cm | 5.4 kg
60 cm | 4.4 kg



BP800



BP1000

Baseplates
BP800 | 35 kg
BP1000 | 61 kg

L-Acoustics Syva



Baseplate
The L-Acoustics Syva adapter head can be combined with the baseplate BP800.

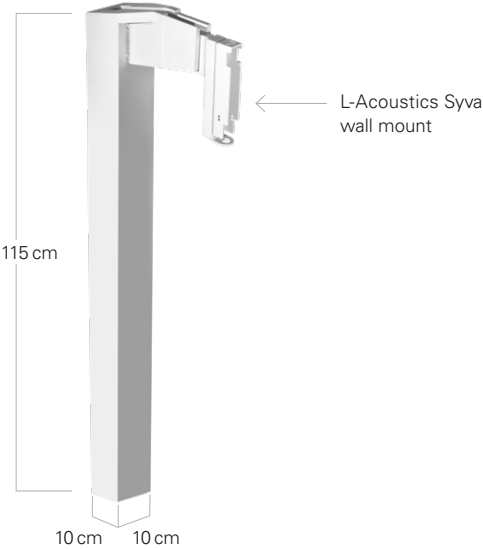


Top
L-Acoustics Syva

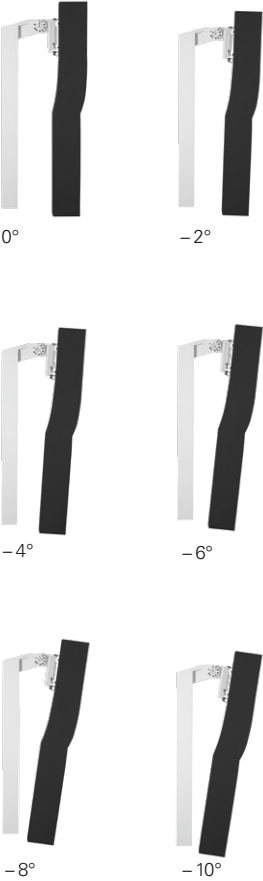
BP800
L-Acoustics Syva Low and Sub

Adapter Head

for L-Acoustics Syva
Color: RAL 7035



The L-Acoustics Syva colinear system is fixed to the L-Acoustics Syva wall mount using the Excellent Line adapter head for the L-Acoustics Syva. The vertical tilt can be set to 0°, -2°, -4°, -6°, -8° or -10°. Horizontal rotation is achieved through the L-Acoustics Syva wall mount.



L-Acoustics Kiva II and Kara



Baseplate
The L-Acoustics Kiva II and Kara adapter heads can be combined with the baseplate BP1000.



Top
L-Acoustics Kiva II

BP1000
L-Acoustics SB15



Top
L-Acoustics Kara

BP1000
L-Acoustics SB18

Adapter Head

for L-Acoustics Kiva II and Kara
Color: RAL 7035, RAL 9005



Depending on the required application, a fitting for the L-Acoustics Kiva II or Kara can be attached to the adapter head. The maximum load is 180 kg. The lowest linear array element can be tilted by up to 15° in steps of 1°.



Tilt
The lowest linear array element can be tilted by up to 15° in steps of 1°.

L-Acoustics A10 Focus/Wide



Baseplate
The L-Acoustics A10 adapter heads can be combined with the baseplate BP1000.



Top
L-Acoustics A10 Focus/Wide

BP1000
L-Acoustics SB15

Adapter Head

L-Acoustics A10 Focus/Wide
Color: RAL 7035



The A10 adapter head can accommodate max. three A10 Focus and/or A10 Wide elements or a combination of three elements. Only a vertical arrangement is possible. The permissible total height, including the speakers, is 400cm. The mounting plate can be tilted in steps of 5°. The tilt angles range from 0° (no tilt) to 45° (max. tilt / max. down tilt). The first A10 element is fixed with an Allen key M10 screw.

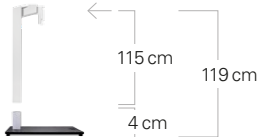
For more detailed information please see www.excellent-line.com/l-acoustics

The high-quality aluminium stand consists of several square tubes measuring 10 × 10 cm at lengths of 60 cm, 80 cm and 100 cm and has a specially adapted L-Acoustics adapter head for Syva, Kiva II, Kara or A10 systems.

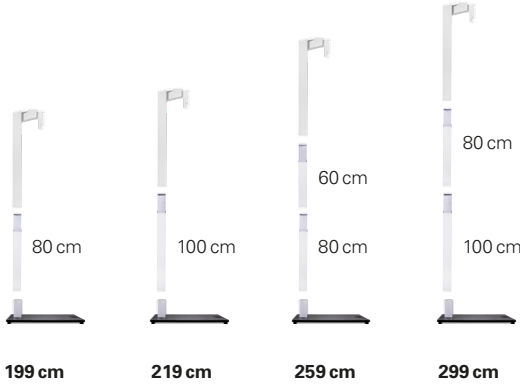
The square tubes are hollow and can be used for cabling. The system can be positioned at a variety of heights thanks to the different tube lengths.

Height Options

for L-Acoustics Syva



Baseplate and Mount
for L-Acoustics Syva

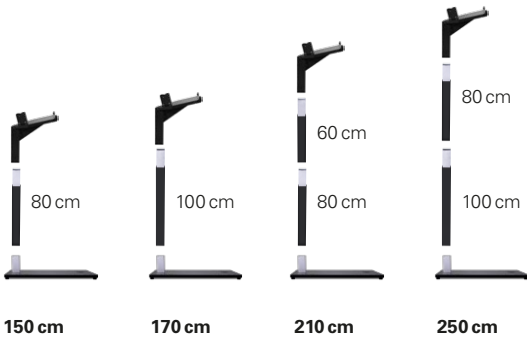


Height Options

for L-Acoustics Kiva II und Kara



Baseplate and Mount
for L-Acoustics Kiva II and Kara

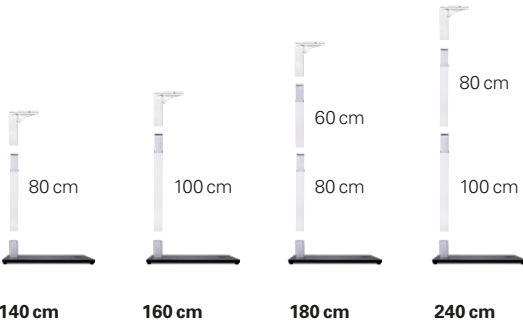


Height Options

for L-Acoustics A10 (Focus/Wide)



Baseplate and Mount
for L-Acoustics A10 (Focus/Wide)



The BP800 baseplate can support L-Acoustics Syva Low and Sub subwoofers and has eight additional drill holes for fixed mounting or mounting to supporting structures.

The BP1000 baseplate can support L-Acoustics SB15 and SB18 subwoofers and has eight additional drill holes for fixed mounting or supporting structures.

Baseplate BP800

Color: RAL 9005



**L-Acoustics Syva
Low and Sub**

**L-Acoustics
SB15**

Baseplate BP1000

Color: RAL 9005



**L-Acoustics
SB15**

**L-Acoustics
SB18**

Let us advise you on the capabilities of
Excellent Line Alpha:
+49 (0) 54 52–97 33 10

The components of Excellent Line Alpha are manufactured
and distributed in Germany.



H.O.F. ALUTEC Metallverarbeitungs GmbH & Co. KG
Brookstrasse 8
D-49497 Mettingen

T +49 (0) 54 52–97 33 10
F +49 (0) 54 52–97 33 19

sales@h-of.de

The Excellent Line is a developing brand,
so we welcome your feedback:
vision@excellent-line.com

